



thermal transfer overprinters *im-model*

*Proven,
reliable and
easy to use with
full on-board
label design
software*

EASYPRINT specialises in thermal transfer printing technology. The ideal solution when printing onto polyethylene, polypropylene, paper, labels, tyvek and other flexibles.

Thermal transfer overprinting is clean, durable and low maintenance, enabling printing of variable text, logos and bar codes in 300 dpi resolution and a wide range of colors.

EASYPRINT provides a comprehensive range of high-speed thermal transfer coders and printers for integration in intermittent / continuous motion vertical and horizontal form, fill & seal machinery, thermal forming machines and labellers.



Reliable, robust and proven

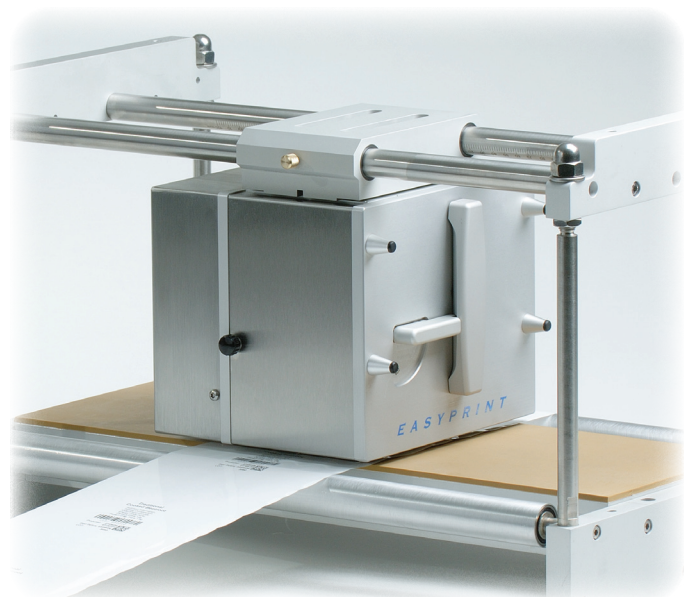
- Reliable ribbon tension system and cassette solution prevents costly downtime
- Robust construction of durable aluminium ensures reliability in industrial environments
- Proven technology with thousands sold world-wide

User-friendly integration

- Easy to install onto intermittent packaging machines and labellers
- The IM-model is simple and intuitive to use, with multi-language 5,7" touch screen and realtime display of status, warnings and remaining ribbon
- Full label design software included in controller, eliminating the need for additional costly software
- Remote management through ethernet for optimal monitoring and control

Optimized production output

- Supreme print capacity with up to 300 messages per minute
- Large print area of 53 x 106 mm ensures flexibility to accommodate a wide variety of design sizes



EASYPRINT provides a full range of brackets for easy integration onto packaging machines and labellers



The UNICONTROL has a large, intuitive touch screen with full label design software included

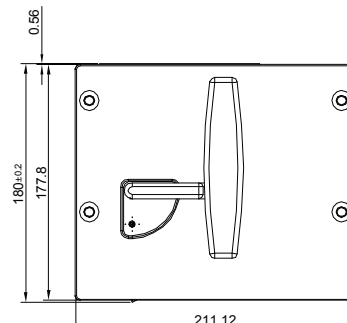
Specifications

im-model

IM2

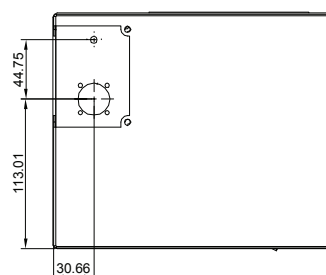
Printer

Weight and dimensions	6,5 kg (W)211 (H)178.4 (D)202,5
Print density	300 dpi
Print speed	50 - 600 mm/sec up to 300 prints / minute (2 line 6 pt)
Print area	53 x 106 mm
Character control	Real time clocks, text (in true type fonts, full Unicode support), logos, bar codes and graphics



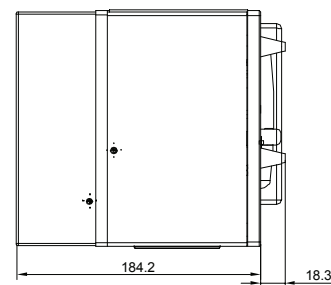
Ribbon System

Ribbon length	450 m
Ribbon width	20 - 55 mm
Ribbon saving	Standard gap minimized



Controller

Weight and dimensions	STD UNICONTROL: (W)202.5 (H)142.3 (D)190+75 5,0 kg FHE UNICONTROL: (W)332 (H)200+75 (D)97 6,0 kg
Display	5.7" intuitive touch screen Menus and character input with full unicode support
Software	Standard: Onboard design software, all features included Option: external windows based software: Easydesign Drivers for CodeSoft, labelview, prisym and Windows available

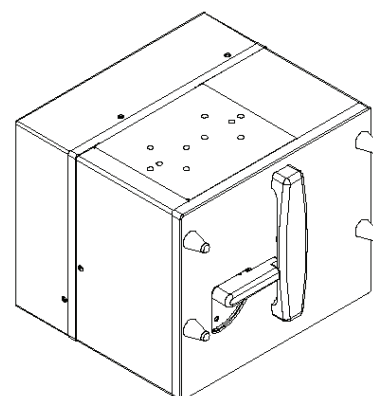


Environment

Installation surroundings	Temperature: 5 - 45 °C (40 - 112 °F) Humidity: 10 - 80% without condensation
Electrical	115/230 VAC, 50/60 Hz, 300 VA
Air pressure	10 lt/minute, 6 bar max, clean air

Features

Special functions	Integration with databases - Ultra high-speed data transmission ensures fast upload. Macro function. Auto real time and date, auto incrementing number and bar codes, auto best before date calculations. Upload or create new designs and modify printer settings while the printer is running. User/password administration.
Alarm output	Low ribbon warning, ribbon end, general faults
Network	Ethernet 10/100 base TX
Options	FHE Controller for harsh environments
Accessories	Full range bracketry and accessories



Your partner:



EASYPRINT A/S
Bredebjergvej 1, 1.sal
DK-2630 Taastrup
Denmark

Tel: +45 46 15 41 40
Fax: +45 46 15 41 70
www.easy-print.com

