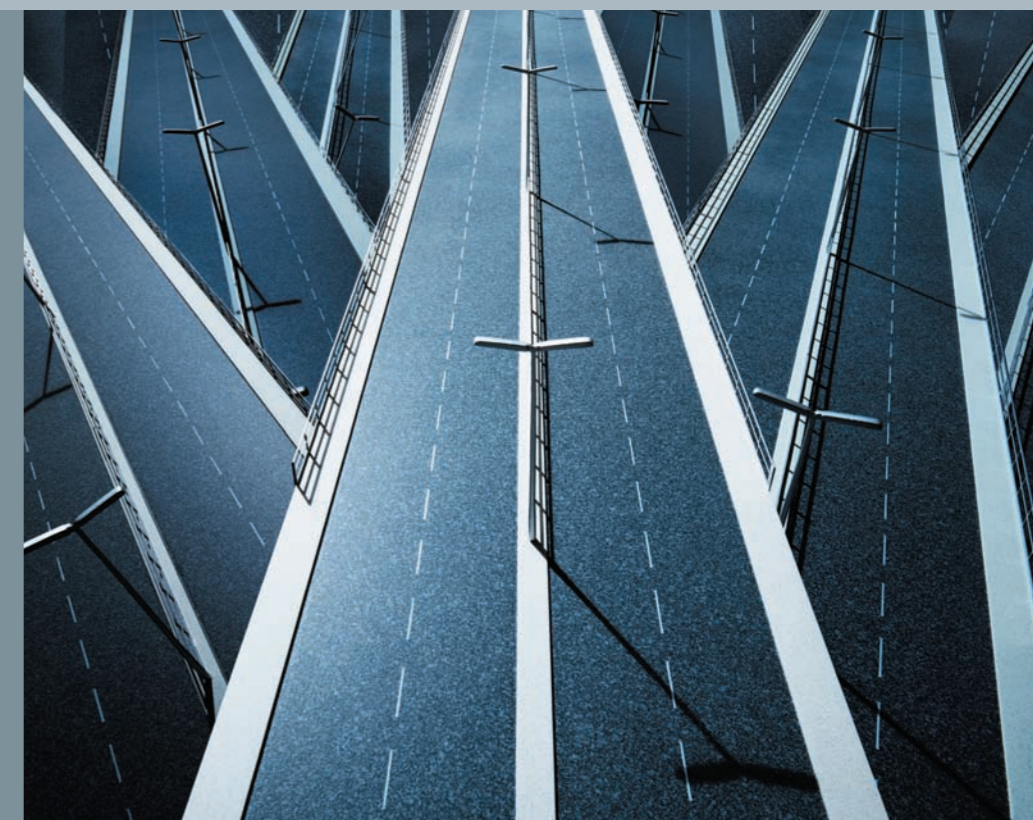


EASYPRINT provides complete high-speed thermal transfer printers for intermittent/continuous motion vertical and horizontal form/fill/seal machines, thermal forming packaging machines, baggers, labelers, cartoners etc.



EASYPRINT was founded in 1991 and has from the beginning been leading the development of applications related to the packaging industry.

In many cases we found the need for special thermal transfer printing solutions, and as a result EASYPRINT has built up a wealth of experience for high tech marking and coding equipment. We felt that this experience should be put to good use

and a massive development began. The goal was a complete line of thermal transfer printers that could be integrated into all types of production lines where in-line marking was required.

This goal has now been achieved, and with many successful installations the EASYPRINT products have earned a great deal of respect world wide.

EASYPRINT A/S
Bredebjergvej 1, 1.sal
2630 Taastrup
Denmark
phone +45 4615 4140
fax +45 4615 4170
mail2@easy-print.com
www.easy-print.com

npctryk as · 55 72 44 00

easyDesign

L A B E L D E S I G N S O F T W A R E

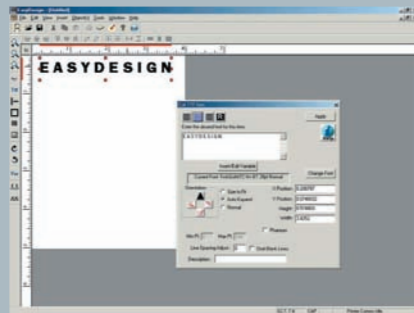
EASYDESIGN is an easy-to-use label creation package with specially developed drivers for EASYPRINT programmable overprinters.

EASYDESIGN is based on the newest technology, and like any other EASYPRINT product it does not let you compromise your marking needs.

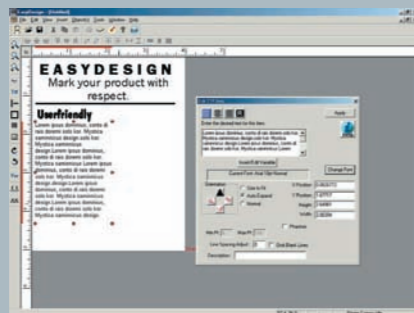
During the development of EASYDESIGN two aspects were in focus: User friendliness and compatibility.

EASYDESIGN has a standard built-in function that converts the existing software output to enable it to communicate with the EASYPRINT products.

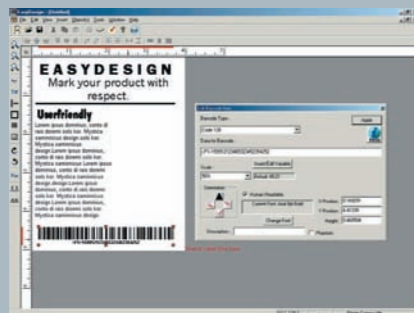
EASYDESIGN therefore eases the design of new layouts - without making your previous work useless.



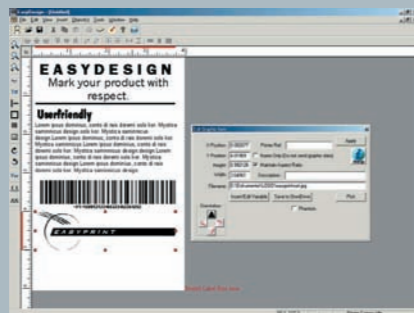
Inserts fixed text easily.
Choose between a variety of fonts.



Multiline text box eases your design when lots of info is required.



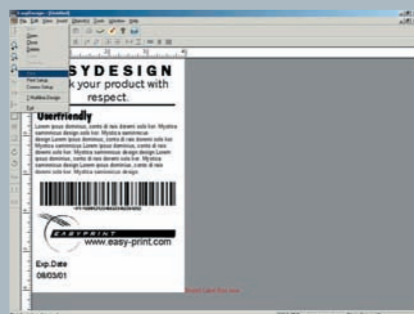
Choose from a large selection of barcodes to meet your specific needs.



Place your graphic on the label, choosing from a wide range of supported formats.



Insert variables, both batch and sequential, into text and barcodes.



When the label is done, just send directly to the EASYPRINTER.

Standard Features

- WYSIWYG Label Design & Editing
- Simple to use Windows Interface
- Supports Windows 95, 98, NT, 2000, Millennium and XP
- Toolbars
- Tooltips
- Rulers – inches or millimetres
- On-Top "View As You Type", design item editing
- Password control for label design, design approval and printing
- Print Preview
- Multiple Document Interface
- SRAM Card Manager

Print Options

- RS232
- Parallel
- File
- Network Printer
- SRAM Card via PCMCIA or driver

Design Objects

- Lines
- Boxes – including rounded corners
- Circles & ellipse
- Barcodes – Code 39, Code 128, EAN128, EAN8, EAN13, ITF, ITF14, ITF Dun 14, UPC-A, UPC-E, support for TTF human readable
- Graphics – import BMP, PCX, PNG, JPEG, TIFF, TGA
- Text – internal printer fonts where available are supported both bitmap and vector fonts allowing variables and multi-line text
- TTF – Windows True Type Fonts supported with embedded variables and multi-line text, also size to fit & auto expand options

Object Edit Functions

- Resize – drag & xy co-ordinate entry
- Position – drag, keyboard fine adjust & xy co-ordinate entry
- Rotate – text, barcodes, lines, boxes in 90 deg steps
- Rotate – TTF and pictures in 1 deg steps
- Phantom items ability
- Colour support
- Objects can be grouped, then aligned, spaced, rotated or sized together
- Zoom in/out and auto zoom to fit screen

Variable Functions

- Prompted – user input at print time
- Printer prompted – prompted at print time from printer control panel
- Counter – output in decimal, hex, octal or alpha with increments or decrements
- Date and time – choice of formats or make your own
- Calculable – free-form visual basic script calculated variables
- Database – input from any ODBC database source
- Serial Number – a stored sequence number unique to each label
- User ID – the ID/name of the user performing the print
- Shift Code – the code of the current shift
- Variable test facility
- Multiple variable entry wizard

Other

- Snap to grid
- Label validator
- Design wizard
- EAN 128 barcode wizard
- ODBC variable wizard
- Design Templates

- SRAM Card manager
- Label design approval via security privilege for pharmaceutical use
- ActiveX and DCOM interface for integration support
- Multi-label per page support
- Multiple print queues
- Label Print Production log facility showing user and variable data printed
- Snap to grid available for easy object alignment

Help

- On-screen help files
- On-line user manual

Printer Drivers

- EasyPrint:
- S-CM / S-IM
- IM2 / IM5
- CM2 / CM5
- COMMUNICATOR
- COMMUNICATOR II
- TM
- ..and Any Windows Printer

Languages

- EasyDesign is available in
- English
- Danish
- Swedish

Minimum system configuration

- Pentium II 200MHz, 32MB RAM, Windows 95

Pharmaceutical validated version available upon special request.

As part of the continuing process of development EASYPRINT reserves the right to alter the specifications and other details of its products without notice. Please enquire to EASYPRINT for latest details.